

e-LADDA Closing Conference

eln pre-summit event



*Scientific and Social
Program*



e-LADDA Closing Conference

Social Program

ELN Welcome Drink

Wed, 18 Oct, 18H30



What a better way to start the conference than celebrating the recent establishment of the ELN over a Porto d'Honra? Expect delicious canapés, Porto wine, other drinks and great company. This is the perfect time to get to know each other and build relationships. We are already looking forward to it!

Dinner

Fri, 20 Oct, 20H



Location: Rua da Igreja de Paranhos 162,
4200-326 Porto

Lunch Boat Cruise

Sat, 21 Oct, 13H30



See the beautiful and breathtaking views of Porto and Gaia. You will sail through the Douro river with Cruzeiros Douro and experience a mouth-watering meal. Take as many pictures as you want, but remember to savour the moment as much as possible. Boarding at Gaia pier.

Suggestions

Downtown Porto

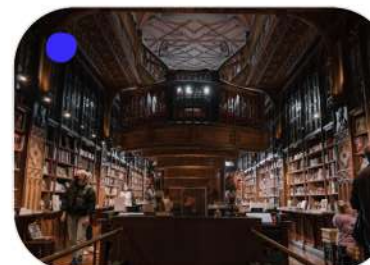
Free ●
Paid ●
Both ●●

The best way to
travel through
Porto, live
public transit
navigation



The "**Gardens of the Crystal Palace**", a beautiful place with peacocks running free. With cafes, restaurants, a library, a children's park and a museum, it is not to be missed. A **13 min walk** takes you to the **Lello bookshop**, described by The Guardian as "one of the most beautiful bookshops in the world". A historic space with an extravagant neo-Gothic wooden staircase and stained glass windows.

*Next to Torre dos Clérigos





D

Next, explore the waiting room of **São Bento station**, built in 1896. More than a century old, the interior of the Beaux-Arts building is decorated with realistic azulejos, the exquisite blue and white tiles for which Portugal is famous.



São Bento

Aliados



Take the D Metro line to see the unbeatable panoramic views from the belfry of the **Torre dos Clérigos**. An aerial view of the city, after 225 steps up a narrow spiral staircase, the view is breathtaking.

A day in Porto!

A day's tour could start at a cafe in **Praça da Ribeira**, surrounded by buildings beautifully adorned with azulejos, with views of the port wine lodges across the Douro and the open-air market nearby.

From Praça da Ribeira, it is a short walk to the **Church of São Francisco** in Infante D. Henrique Square.

Behind São Francisco Church, is the **old Stock Exchange Palace (Palácio da Bolsa)**, a pompous 19th-century building with a vast neoclassical facade.

The **Dom Luís I Bridge**, which stretches from the Ribeira district of Porto over the Douro River to Vila Nova de Gaia.



Have a late night drink in the Galerias de Paris at the centre of downtown Porto.

The Galerias de Paris street is the centre of the city's night life with dozens of open-air bars.

Try a Francesinha at the Cervejaria Brasão.

The Francesinha is a local sandwich of ham, beef, sausage and cheese with a warm tomato beer sauce and is perhaps the most popular "bite" in Porto. Do not leave Porto without trying it!

Go on a guided tour at a Port wine cellar.

The Port Wine Cellars in Vila Nova de Gaia continue to be a major attraction for visitors, offering tastings of Port Wine and guided tours.

Pass by **Porto Sé Cathedral**, which started as a fortified church. Its architectural elements range from Romanesque to Gothic to Baroque. From the square where the cathedral stands, there is a perfect view over the roofs of old Porto.

The **Serralves Museum of Contemporary Art**, designed by the architect Álvaro Siza Vieira, has hosted exhibitions by Paula Rego, Andy Warhol and others.

The cultural visit can be rounded off with a stroll through the extensive gardens and green spaces, where oversize outdoor works like Claes Oldenberg's trowel sculpture looms.



Take the F Metro line to the irregularly shaped building designed by architect Rem Koolhaas. It stands out for its modern lines and the variety of cultural programmes it offers throughout the year. The **Casa da Música** also offers guided tours. Don't miss the chance to see a live music show in one of its stunning concert halls.



Casa da música

F

Useful Contacts

Porto Police

National emergency number: 112
Local Police - Tel: 00351 222 081 833

Porto Tourism Office

Central Tourist Information Office
25 Rua Clube Fenianos, Porto
Tel: 00351 223 393 472

Travel Information

Sá Carneiro Airport - Tel: 00351 229 432 400
Invicta Radio Taxis do Porto - Tel: 00351 225 076 400
Subway: <https://www.metrodoporto.pt>